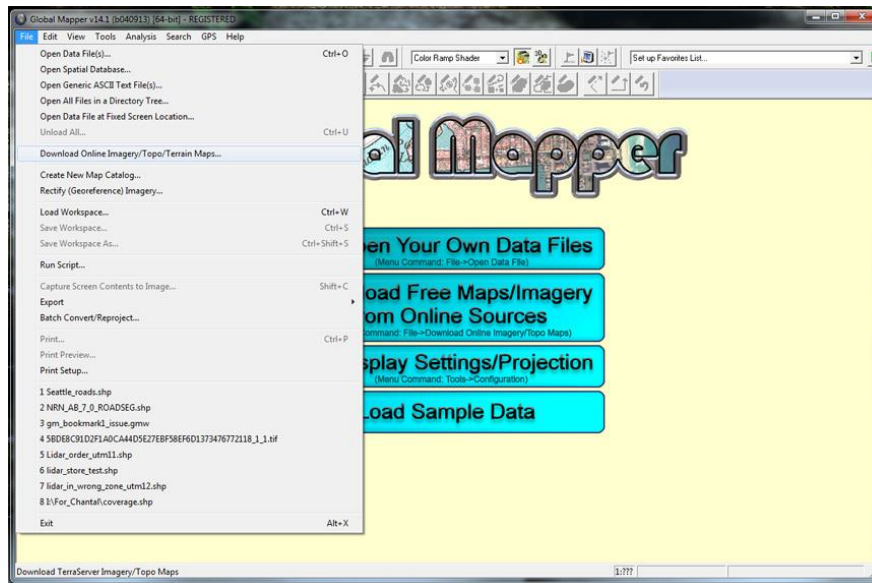


This document provides step-by-step instructions on getting the most from your Valtus Views | Spatial Data as a Service subscription. If at any time you have additional questions or need assistance on features not covered here, our contact information is provided in the last section.

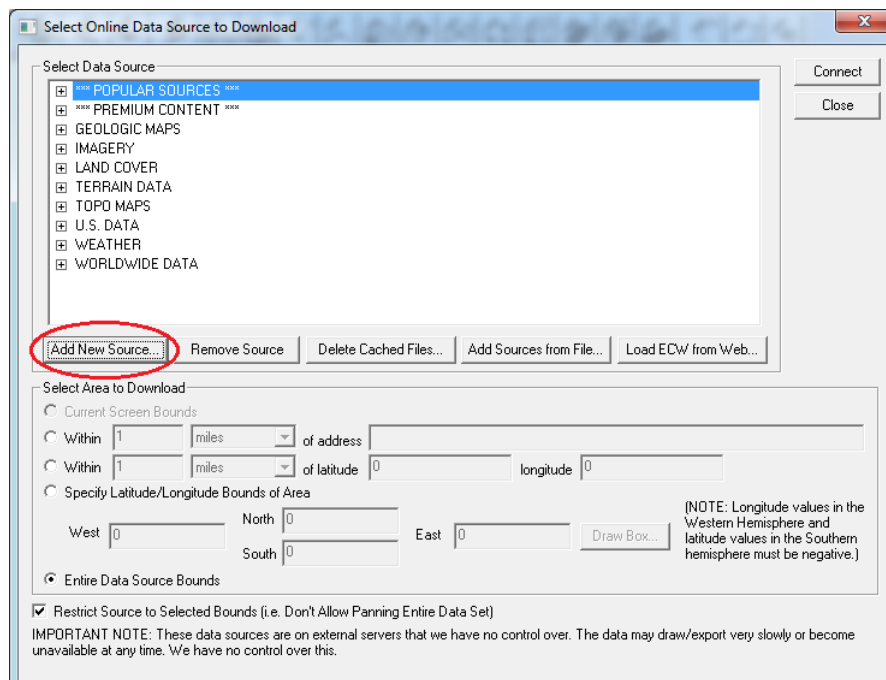
These steps only need to be completed the first time you add the Views imagery service.

To add the Valtus Views WMS services to Global Mapper:

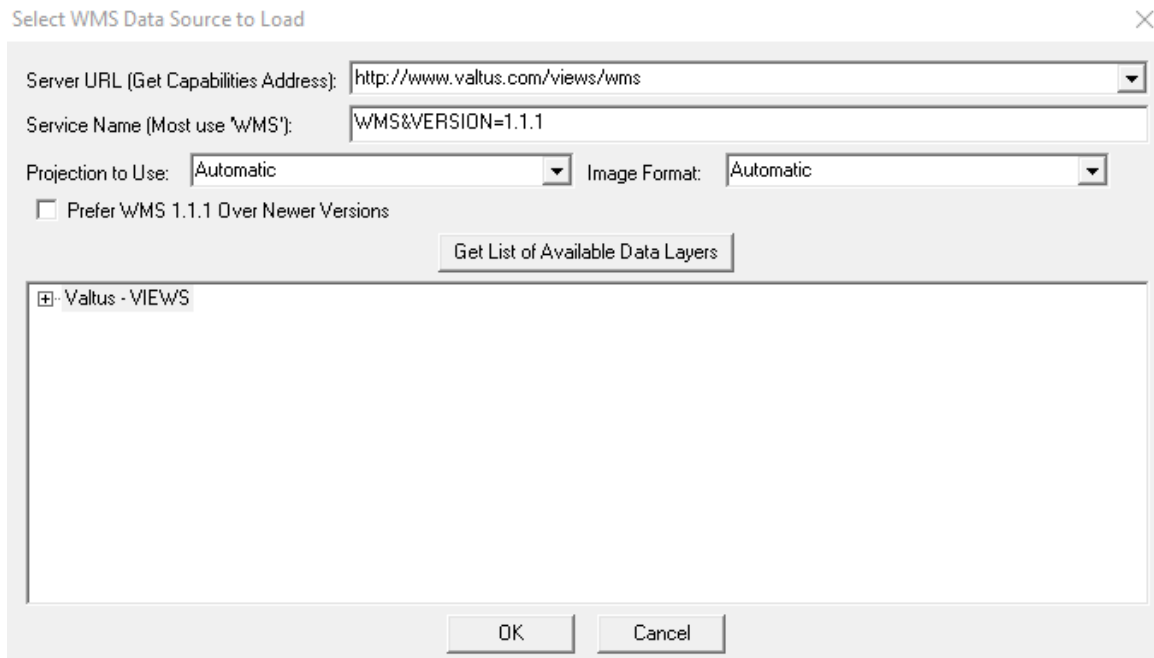
Select "File" then "Download Online Imagery/Topo/Terrain Maps..."



The 'Select Online Data Source to Download' window will open. Click on Add New Source...



- From the drop-down list, select "WMS (Web Map Service)" and click OK
- Fill in the following URL: <http://www.valtus.com/views/wms>

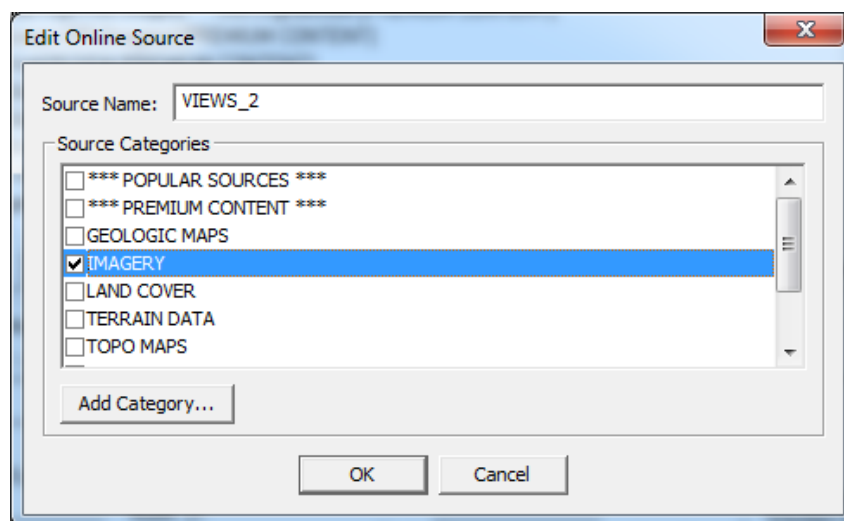


Select 'Get List of Available Data Layers'

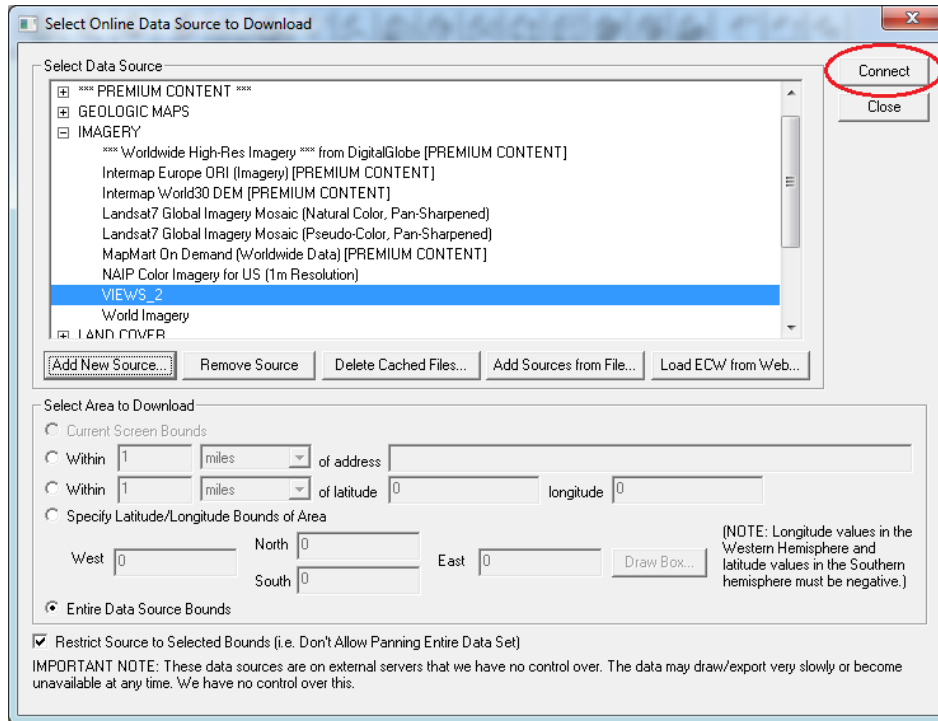
Enter your username and password

Select the Service you want (VIEWS, VIEWS_2, etc.) and click 'OK'.

The 'Edit Online Source' window will open. Click on the 'Imagery' category and click OK.



Valtus Views will be added to your list of Data Sources



Click the 'Connect' button. Views will be added to your Global Mapper project.

The Valtus Technical Support Team is here to help. Should you require assistance or would like additional information, please contact us at support@valtus.com.